



Maple Crest Campus

Newsletter
January 2026



Places You'll Find Us

Keep an eye out for our adventures in 2026

CNA Opportunities

Maple Crest Campus nursing home is excited to announce we have started our CNA classes right here on campus. We have started offering classes. Apply online or reach out to find out information on upcoming classes.

CHECK
IT
OUT

New Job

Maple Crest Campus nursing home is looking to hire, CNAs and nurses in our nursing home. If you, or someone you know, would like to apply-stop in today or apply online at www.maplecrestmanor.com



Holiday Decorations

As the holiday season draws to a close, please assist your loved ones in tidying up their rooms and ensuring that all holiday decorations are taken home.

A Few Reminders

Remember that all new clothing and blankets need to be marked with names. Housekeeping can assist with this. We also want to remind we can not have heating pads or heated blankets in our facility.

Special Events

1/21 Hearing Clinic





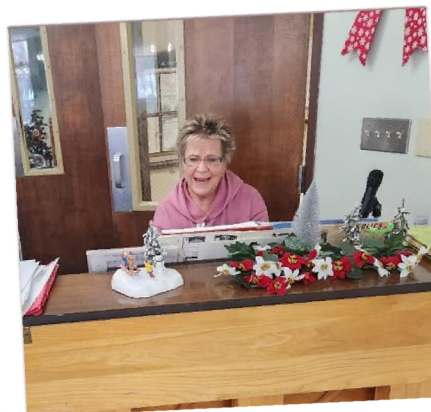
A Snapshot into the last month at Maple Crest Campus



Making cards with Joyce



Chili Cook Off



Christmas Carols with Mary



Christmas Presents



Pie in Bretts Face



Staff Christmas Party



Coloring with friends



Donations to Activities





Thank You!

We can not thank everyone enough for making the holidays so special for Maple Crest Campus! Residents, tenants, and staff all felt the love this holiday season.



Boho Blooms

West Union--563-422-5729



Welcome

Welcome our new staff: Faith Steinbronn- dietary.
Welcome to our new tenant in memory care: Mary Berg
Best of luck to those who left our facility: John Green.
Our thoughts are with the families of Laura Berry, Laverne Berns, and Myrna Schmelzer who passed away.



Allison Butikofer 4 years

Taylor Dean 1 year

Annette Hutchinson 1 year

We Can Help



If you or a loved one is looking for assisted living, memory care, long term care or skilled rehab we are here to help. Call today and see how we can help you. 563.425.3336



This Month's Anniversaries

Kendra Niehaus 1 year

Emily Schmidt 1 year

Wanda Stepan 5 years

This Month's Birthdays

Staff:

1/3 Paige Mihm

1/8 Annette Hutchinson

1/14 Chelsey Hutchinson

1/24 Heather Collins

Residents & Tenants:

1/1 Mary Berg

1/3 Gerald Kremer

1/5 Joyce Harnish

1/26 Darrel Fox



The Maple Crest Correspondence-2025 A Year in Review

As 2025 comes in an end, we too, like to look back at the year and share our highlight reel. Looking back, it truly is amazing all that Maple Crest has accomplished and we are excited to share a few of those statistics with you:

*57-The average daily campus census. Daily we are lucky enough to care for the members of our community who are now needing that helping hand. Bathing, cleaning, laundry, meals, transportation, doctor appointments, activities, and so much more goes in to making sure the lives of all we care for are catered to in effort to make them as comfortable and successful as possible in meeting their goals.

*599-The number of patient days we had in skilled care from January 1-November 30. These days see intense therapies with big goals. Strength, conditioning, and milestones are met in order to get residents to a baseline they have set for themselves. We are thrilled to boast high success rates with goals to return to home or a higher level of care. We strive to see this area of our service continue to grow.

*~57,114-The number of meals prepared for residents for from January 1-November 30. This number does not reflect the extra meals for staff, guest, holidays, events, or our Meals on Wheels program. All meals are curated by our dietician, dietary manager, and speech therapist ensuring they are meeting all dietary requirements. It is a number that truly puts behind the scenes work into perspective.

*~108,955-The number of working hours thus far in 2025. Nursing, activities, social work, therapy, management, dietary, housekeeping, and maintenance. We are unbelievably grateful for all those that are a part of our team to make each day run smooth.

*45-The numbers of new team members in 2025. On average, Maple Crest employs 105 employees and we are proud to boast being one of the largest employers in Fayette. We are honored to employee so many empathetic, intelligent and kind individuals to care for the beloved members of our communities.

*17-The number of Quality Assurance and Performance Improvement projects completed or in action. While the state only requires 1, Maple Crest has set major improvement goals and continue to work toward them daily. These projects have a major impact on the daily operation of the campus. Of these QAPI projects, the creation and implementation of a state approved C.N.A. program has been completed, Maple Crest has submitted an application to become a Bronze Award Recipient (stay tuned), resident falls have decreased significantly with closer monitoring and intervention placement, mental health has come to the forefront of conversation and campus updating has become a daily checkoff list. We are extremely proud of the strides made.

*365-The number of days we are grateful. Grateful that families have entrusted us to take care of the pillars of family. Allowed us to guide them in comfort and contentment of knowing they are cared for and close by. For getting to learn from lifetimes of lessons and memories and write our own page in these beautiful stories. The most important number of all this year.



THE MAPLE CREST CORRESPONDENCE-December 2025
2025-A Year in Review

Sunday	Monday	Tuesday	Wednesday	Thursday	Friday	Saturday
 <h1>January 2026</h1> <p>Cheers to a Healthy and Happy New Year</p> <p>Activities are Subject to Change</p>				<p>May this New Year Bring Joy and Peace to All</p> <p>New Year's Day</p>	<p>1 8am – Morning News 2 10am – Hydration Huddle 2pm – Church service with Pastor Peck</p>	<p>3 Happy Birthday Gerald K</p> <p>8am – Morning News Puzzles at of 100</p>
<p>4 8am – Morning News Daily Prayers</p>	<p>5 Happy 101 Birthday Joyce H 8am – Morning News 10am – Sip N Social 2pm – Joyce's 101yr Birthday Party</p>	<p>6 8am – Morning News AM- Therapy Noon – Honor our Flag 2pm – Beach Ball Polo</p>	<p>7 8am – Morning News 10am – Catholic Communion 10:30 – 1:1's Noon – Trivia 2pm – Bingo</p>	<p>8 8am – Morning News 10am – Tea Time with Renee Noon – Honor our Flag 1:30pm – Christmas Take Down</p>	<p>9 8am – Morning News 10am – Hymn Singing 2pm- Church service with Pastor Post</p>	<p>10 8am – Morning News Super Bowl Wild Card Round 4:30pm on NBC 8pm on NBC</p>
<p>11 1:30pm – Music with Linda and Curt NFC matchup 4:30pm & 8pm – on NBC</p>	<p>12 8am – Morning News 10am – Hydration Time 2pm – Milkshake Monday 8pm – Wild Card Matchup on NBC</p>	<p>13 8am – Morning News 10am – Pool Noodle Polo Noon – Trivia 2pm – Music with Jerry Anderson</p>	<p>14 8am – Morning News 10am – Catholic Communion 10:30 – 1:1's Noon – Trivia 2pm – Bingo</p>	<p>15 8am – Morning News 10am – Tea Time with Renee Noon – Honor our Flag 2pm – Dippin' in the New Year</p>	<p>16 8am – Morning News 10am – Steppin to the Oldies 2pm – Church service with Pastor Brian</p>	<p>17 8am – Morning News Play-offs 4:30 – NBC 8pm - CBS</p>
<p>18 8am – Morning News Play-offs 3pm – CBS 6pm - FOX</p>	<p>19 8am – Morning News 10am – Sip-N-Social Noon – Trivia 2pm – Stories with Anette and Popcorn <small>Dr. Martin Luther King Jr. Day</small></p>	<p>20 8am – Morning News 10am – Pool Noodle Polo 2pm- Fay Co Conservation Info</p>	<p>21 8am – Morning News 10am – Catholic Mass w Fr Davis Noon – Trivia 2pm – Bingo</p>	<p>22 8am – Morning News 10am – Tea Time with Renee Noon – Honor our Flag 2pm – Crafting</p>	<p>23 8am – Morning News 10am – Hymn singing Noon – Trivia 1:30pm - Nail Care</p>	<p>24 8am – Morning News 2pm – Music with Tim the Music Man</p>
<p>25 8am – Morning News Conference Championship 3pm – CBS 6:30pm – FOX</p>	<p>26 Happy Birthday Darrel 8am – Morning News 2pm – Card Games <small>Australia Day (Observed)</small></p>	<p>27 8am – Morning News 10am – Pool Noodle Polo 1:15pm – Resident Council 2pm – Dave Poggenklass</p>	<p>28 8am – Morning News 10am – Catholic Communion 10:30 – 1:1's Noon – Trivia 2pm – Bingo</p>	<p>29 8am – Morning News 10am – Tea Time with Renee Noon – Honor our Flag 2pm – Grasshoppers & Cheese</p>	<p>30 8am – Morning News 10am – Steppin to the Oldies 2pm – In Memory Of.....</p>	<p>31 8am – Morning News Puzzles at end of 100 wing</p>

January

Maple Memory Lane 2026

Sunday	Monday	Tuesday	Wednesday	Thursday	Friday	Saturday
				1 10:00 Coffee and conversation 2:00 Movie and popcorn	2 10:30 Walking Club 1:30 Church with Pastor Peck @NH	3 10:00 Walking Club 4:00 Adult Coloring and Ice Cream Treats
4 10:00 Coffee and conversation 4:00 Watercolor Painting	5 9:00 Spa Morning 2:30 Fireside Reminisce	6 10:00 Coffee and conversation 3:00 Nail Care	7 10:00 Catholic Communion 4:00 BINGO	8 10:00 Seated Balloon Volleyball 4:00 Water coloring	9 10:00 Giant Tic Tac Toe 2:00 Church with Pastor Post @NH	10 10:00 Walking Club 4:00 Movie and popcorn
11 10:00 Coffee and conversation 1:30 Curt and Linda @ NH	12 10:00 Coffee and conversation 1:30 Monthly Birthday Party	13 10:00 Coffee and conversation 2:00 Jerry Anderson @NH	14 10:00 Coffee and conversation 2:00 BINGO	15 10:00 Seated Balloon Volleyball 3:00 Coffee and conversaton	16 10:00 Coffee and conversation 2:00 Church with Pastor Brian @NH	17 10:00 Walking Club 4:00 Movie and popcorn
18 10:00 Coffee and conversation 4:00 Ball Toss Game	19 9:00 Spa Morning 2:00 Ice Cream Sundays	20 10:00 Coffee and conversation 2:00 Fayette Co. Conservation @NH	21 10:00 Mass @NH 2:00 BINGO Hearing Aide Clinic	22 10:00 Seated Balloon Volleyball 4:00 Water coloring	23 10:00 Adult Coloring 2:00 Coffee and conversation	24 10:00 Walking Club 2:00 Tim the Music Man @NH
25 10:00 Coffee and conversation 4:00 Watercolor Painting	26 9:00 Spa Morning 2:30 Craft	27 10:00 Coffee and conversation 1:30 Dave Poggenklass @NH	28 10:00 Coffee and conversation 2:00 BINGO	29 10:00 Coffee and conversation 2:00 Movie and popcorn	30 10:00 Adult Coloring 2:00 Coffee and conversation	31 10:00 Walking Club 4:00 Movie and popcorn

Birthday's:

1/1 Mary Berg

1/14 Chelsey Hutchinson



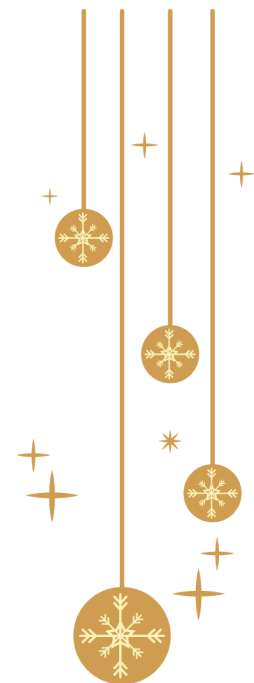
January

Assisted Living Calendar

2026

Sunday	Monday	Tuesday	Wednesday	Thursday	Friday	Saturday
				1 9:30 Coffee and Conversation 1:30 Move and popcorn	2 9:30 Coffee and Reminisce 2:00 Church with Pastor Peck	3 9:30 Coffee and Reminisce 2:00 Cash BINGO
4 9:00 Lutheran Church on Television 2:00 Play Cards	5 9:30 Coffee and Reminisce 2:00 Skee Ball	6 9:30 Coffee and conversation 1:30 Women of Faith Meeting	7 9:30 Coffee and reminisce 2:00 Cash BINGO	8 9:30 Coffee and Conversation 1:30 Move and popcorn	9 9:30 Coffee and conversation 2:00 Church with Pastor Post	10 9:30 Coffee and reminisce 2:00 Cash BINGO
11 9:00 Lutheran Church on Television 1:30 Curt and Linda @NH	12 9:30 Coffee and conversation 2:00 Library Talks w/ Annette	13 9:30 Coffee and conversation 2:00 Music with Jerry Anderson @NH	14 10:00 Catholic Communion @NH 2:00 Cash BINGO	15 9:30 Coffee and Conversation 1:30 Sing A Long with Peggy and Joyce	16 10:00 Coffee and conversation 2:00 Church with Pastor Brian	17 9:30 Coffee and reminisce 2:00 Cash BINGO
18 9:00 Lutheran Church on Television 2:00 Coffee and conversation	19 3:30 Coffee and conversation 2:00 Nail Care	20 10:30 DG Trip 2:00 Fayette Co. Conservation @NH	21 Hearing Aide Clinic 10:15 Mass @ NH 1030-12 BINGO Store Tenant Meeting at Lunch 2:00 Cash BINGO	22 9:30 Coffee and Conversation 2:00 Crafts	23 9:30 Coffee and Conversation 2:00 Monthly Birthday Party	24 9:30 Coffee and reminisce 2:00 Cash BINGO
25 9:00 Lutheran Church on Television 2:00 Play Cards	26 Casey's Pizza for Lunch 2:00 UNO Game	27 9:30 Coffee and conversation 2:00 Dave Poggenkalss @NH	28 10:00 Catholic Communion @NH 2:00 Cash BINGO	29 9:30 Coffee and Conversation 2:00 Wine and Cheese	30 9:30 Coffee and Conversation 1:30 Move and popcorn	31 9:30 Coffee and reminisce 2:00 Cash BINGO





Making Life Easier:

Third Wednesday of every month FREE On-Site hearing clinic:

Call Maple Crest for an appointment. 563-425-3336

Monday-Friday Meals on Wheels:

We deliver meals to your door! Please contact Maple Crest if you would like more information or to get on our delivery route. Must reside within Fayette city limits.



Maple Crest Campus

Follow Us



maplecrestmanor.com

